



## SF6 P2

### Instrument User Manual V1.3

---



Register  
your instrument  
online to receive your  
extended Warranty.

## **Register your instrument online for an extended warranty**

Thank you for purchasing your Ion Science instrument.

The standard warranty of your instrument can be extended to two  
years.

To receive your extended warranty, you must register your instrument online within one month of purchase (terms and conditions apply).

Click [here](#) to extend your instrument warranty, or scan the QR code below.



## Declaration of conformity

Name und Adresse des Herstellers / Manufacture's name and address /  
ISM Deutschland GmbH, Laubach 30,

Die ISM Deutschland GmbH bescheinigt die Konformität für das Produkt the product / ISM Deutschland GmbH déclare la  
conformite du produit

Bezeichnung / Product name :  
**SF6-Raumluftmonitor / SF6-Roommonitor**

Typ / Type / Type:  
**SF6 AREACHECK P2**

Mit den folgenden Bestimmungen / with applicable regulations / avec les directives suivantes

EMV Richtlinie 89/336/EWG ergänzt durch 91/263/EWG, 92/31/EWG  
EMC Directive 89/336/EEC amended by 91/263/EWG, 92/31/EEC  
Directive EMC 89/336/CEE amendée par 91/263/EWG, 92/31/CEE  
Niederspannungsrichtlinie 73/23/EWG ergänzt durch 93/68/EWG  
Low-Voltage Equipment Directive 73/23/EEC amended by 93/68/EEC  
Directive des équipements basse tension 73/23/CEE amendée par 93/68/CEE

Angewendete harmonisierte Normen / Harmonized standards applied / Normes harmonisées utilisées  
Sicherheit / Safety / Sécurité

EN 61010-1 : 1993 / IEC (CEI) 1010-

Überspannungskategorie / Overvoltage category / Catégorie de surtension: II

Verschmutzungsgrad / Degree of pollution / Degré de pollution: 2

Elektromagnetische Verträglichkeit / Electromagnetic compatibility / Compatibilité électromagnétique

EN 50082-2: 1995 / VDE 0839 T82-2  
ENV 50140 : 1993 / IEC (CEI) 1001-4  
ENV 50141 : 1993 / IEC (CEI) 1000-4  
ENV 61000-4,2 : 1995 / IEC (CEI) 1000

Prüfschärfe /Level / Niveau = 2  
EN 61000-4-4: 1995 / IEC (CEI) 1000

Prüfschärfe /Level / Niveau = 3  
EN 50081-1 : 1992 / EN 55011 : 1991 / CISPR11

Gruppe / group / groupe = 1, Klasse / Class / Classe = B

Datum / Date / Date  
01.08.2005

Unterschrift / Signature / Signatur



Hr. Becker – *Technical Director*

## Contents

<b>Declaration of conformity .....</b>	<b>2</b>
<b>Contents .....</b>	<b>3</b>
<b>Installation.....</b>	<b>4</b>
Location .....	4
Wiring .....	5
Network diagram .....	6
Wiring details.....	7
<b>Operation .....</b>	<b>7</b>
Auto-zero at startup .....	7
Measuring interval.....	7
Indicator lights .....	8
Lamp test and manual reset .....	8
<b>Configuration via the PC interface .....</b>	<b>9</b>
Connecting to the host computer.....	9
User parameters .....	9
<b>Changing the sensor unit.....</b>	<b>10</b>
<b>Technical data .....</b>	<b>11</b>
<b>Instrument warranty and service .....</b>	<b>12</b>
Warranty.....	12
Service.....	12
<b>Manual log.....</b>	<b>12</b>
<b>ION Science Contact Details .....</b>	<b>14</b>

## Installation

### Location

SF6 AREACHECK P2 is designed for indoor wall mounting. Since SF6 tends to sink towards the ground in undisturbed air, we suggest to place it approx. 50 ... 60 cm above ground level.



## Wiring

Mains power connects to the orange clamp block, according to the designation printed on the PCB near each clamp.

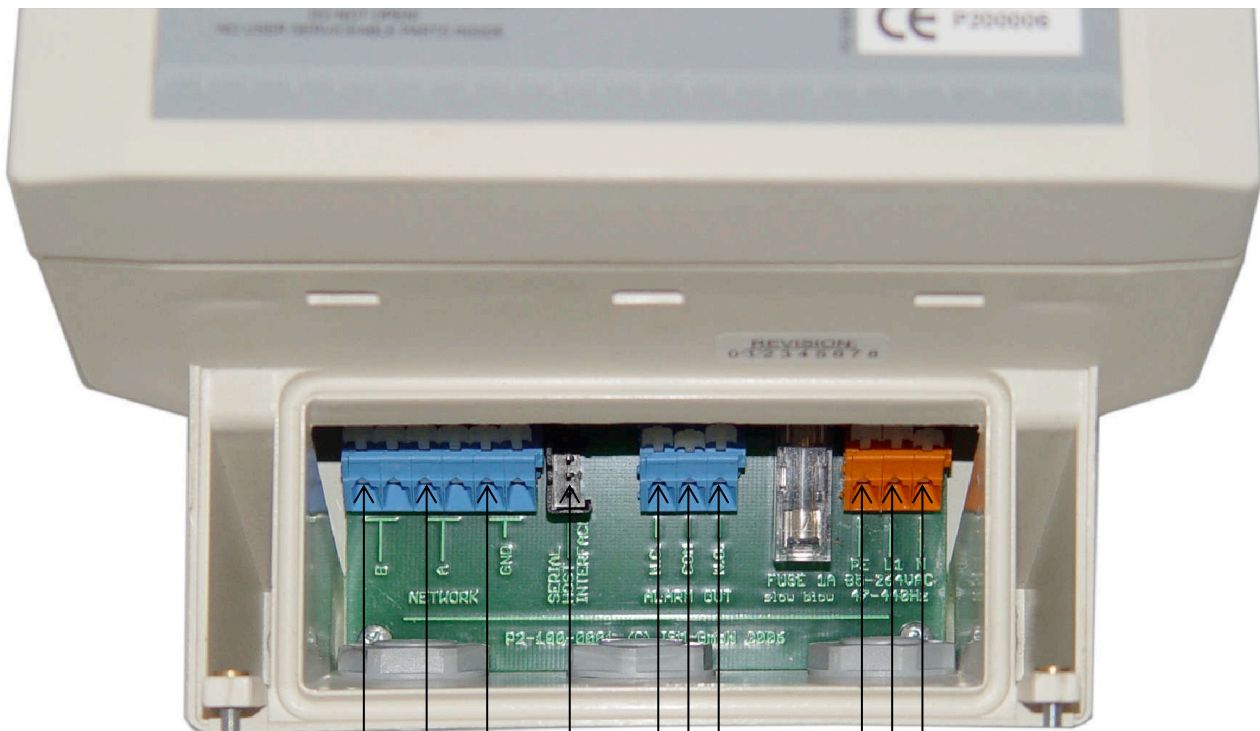
For an optional audible and/or visible alarm device, a voltage free switchover relay output is supplied. It is available on the blue 3 position clamp block in the middle. Contacts are, from left to right: N.O. / COM / N.C.

During normal operation, COM connects to N.O. During an alarm or error condition, COM disconnects from N.O. and switches over to N.C. The same applies in case of power failure, and whenever the instrument is taken into setup mode via the host computer interface via the RS232 connector.

The leftmost 6 position clamp block is provided for network operation. Physically, the network follows RS485 standards and hence has three wires named A, B, and GND. Their positions are marked on the

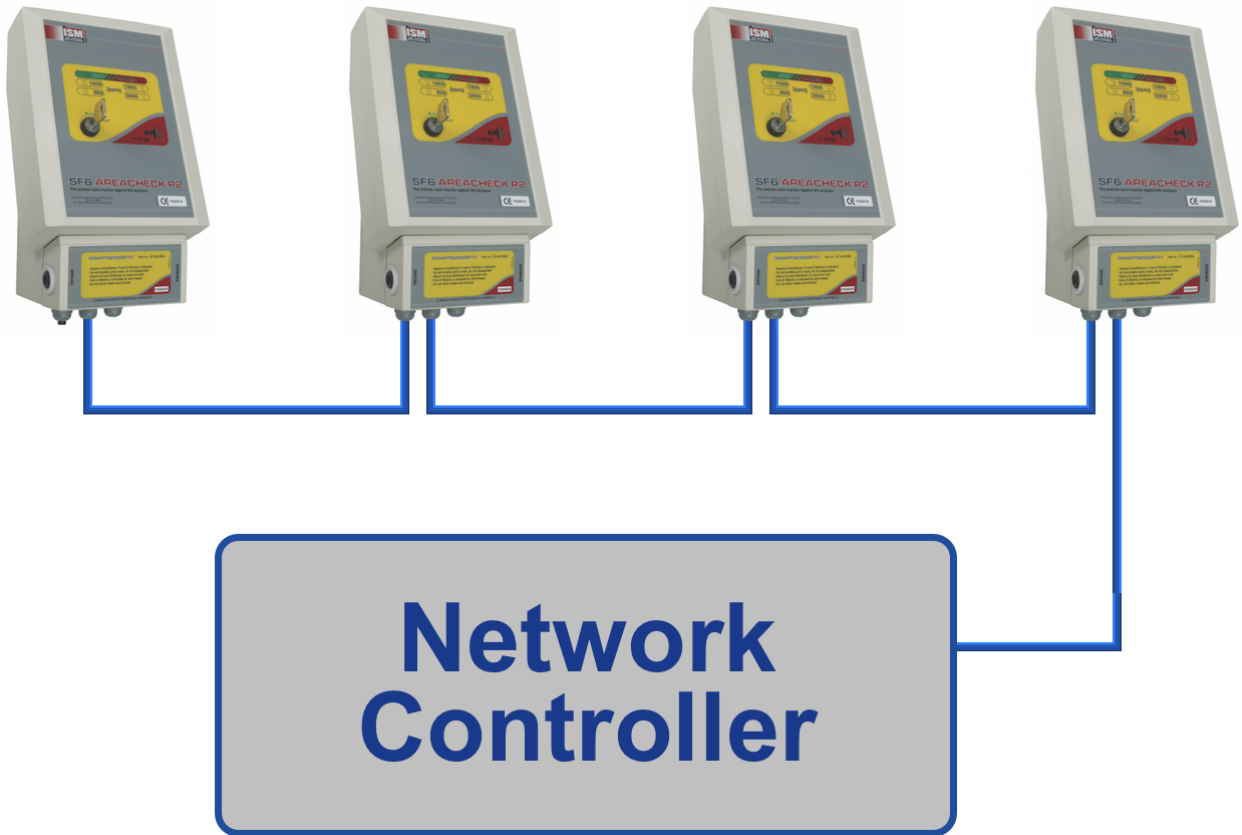
PCB next to the clamps. They must be wired to the corresponding pins on the SF6 NETWORKCONTROLLER P2NC. Double clamps are provided for each wire for easy “daisy chaining” of several instruments.

Note: the network controller can be purchased on request.

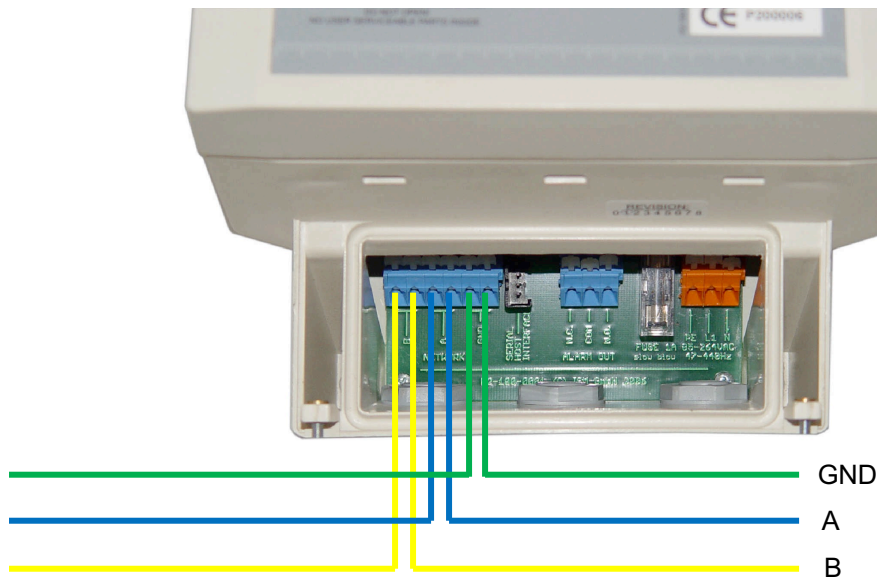


- RS 485 daisy chain PIN B
- RS 485 daisy chain PIN A
- RS 485 daisy chain PIN GND
- RS 232 Connector
- Alarm Relay PIN “Normally Closed”
- Alarm Relay PIN “Common”
- Alarm Relay PIN “Normally Open”
- Supply Voltage “N”
- Supply Voltage “L1”
- Supply Voltage “EARTH”

## Network diagram



## Wiring details



## Operation

### Auto-zero at startup

To precisely determine SF6 concentration, SF6 AREACHECK P2 requires a reference value representing clean air. This reference value is taken and stored whenever the instrument is powered up or reset. You should therefore make sure that power up takes place under clean air conditions.

A fresh reference value is also taken after manual reset via the key switch. Therefore, after each manual reset, the instrument will temporarily only respond to SF6 concentrations exceeding the level that was present at the time of manual reset. This will avoid the next measuring cycle to trigger an undesired, new alarm. The reference value will auto-adapt to falling SF6 concentrations, so after once meeting a clean air condition, SF6 AREACHECK P2 will automatically return to full sensitivity.

Since a reset is also performed when the instrument is taken into setup mode via the host computer interface, the above also applies in this case.

After Power up or reset, the first measuring cycle starts immediately, beginning with the fan run time.

### Measuring interval

Since SF6 AREACHECK P2 is designed to determine slowly changing concentrations, it samples the air at a fixed time interval rather than measuring continuously. This feature minimizes the amount of air per time that passes the instrument's intake system, thus extending its service life.

Via the measuring time interval, it is possible to perfectly adapt the instrument to the actual application. For monitoring generally unattended spaces, a long time interval should be selected, while in the working area a shorter interval is suggested.

SF6 AREACHECK P2 comes with a factory set measuring interval of 30 minutes, which is the suggested starting point for most applications.

## Indicator lights

6 LEDs on the instrument's front panel represent its state as follows:  
Placement of LEDs:

### RUN

This light acts as a life sign to confirm the SF6 AREACHECK P2 is in operation. As long as no internal error condition is met, it will blink at all times. During the actual SF6 measurement (normally, this phase is very short), it will blink at a faster rate.

*Should this lamp stop blinking, an internal error has occurred.*

### ALARM

This light will be permanently on if the last measuring cycle has determined a SF6 concentration above the selected alarm threshold.

In case of an internal error state, it will blink quickly.

The instrument's internal audible alarm works in parallel with this lamp.

### 500 / 1000 / 1500 / 2000 [ppm]

These 4 yellow lamps reflect the last sampling period's result in terms of alarm levels as designated.

On instruments equipped with the optional oxygen sensor, these lights have the following additional functions:

- The two leftmost LEDs (500+1000ppm) will blink when an oxygen concentration below the lower alarm threshold of 16% is present.
- The two rightmost LEDs (1500+2000ppm) will blink when an oxygen concentration above the upper alarm threshold of 25% is present.



## Lamp test and manual reset

When the key switch is turned to the spring return "TEST" position, all lamps, the internal audible alarm and the optional external alarm device will turn on until the key switch is released.

When released, a pending alarm condition is cleared.

NOTE: An error condition will NOT be cleared!

When the key switch is turned and released twice within 2 seconds, a system reset is performed which also clears any pending alarm and error conditions and logs a fresh reference value.

## Configuration via the PC interface

### Connecting to the host computer

Parameter modification in stand-alone operation is done exclusively through the host computer interface. This has the clear advantage that any unintended or unauthorised fiddling is discouraged.

The user parameters described in the following are relevant for standalone operation only. In network operation, parameters received from the network base unit will take precedence.

The host computer interface follows RS232 standards. A special interface cable connects to the 3-position plug, which is found between the two blue clamp blocks.

The lamp next to the plug indicates the presence of valid RS232 levels from the host. It will be lit when the host is on and correctly connected.

On the host computer, a standard terminal program is used to talk to the SF6 AREACHECK P2. A suitable program called "Hyper Terminal" is a standard Microsoft Windows component and by default present in most installations. Optionally, any other terminal software will work.

Set up the terminal program for the following parameters: 9600 baud, 8 data bits, no parity, 1 stop bit. This is a standard configuration also known as "9600-8-N-1". Further, select "none" for the handshake protocol, and "TTY" as emulation if available. The option "append CR" for received lines should be checked for a more readable screen output. For your convenience, we will be pleased to send you a predefined configuration file for "Hyper Terminal" which will perform all relevant settings for you.

NOTE: While the PC interface is connected, the instrument will talk to the host computer only and no longer communicate over the network. When present, an SF6 NETWORK CONTROLLER P2NC will see this station as "OFFLINE" and issue an alarm accordingly.

### User parameters

User adjustable parameters are the time interval between each two samples ("Scan period") and the alarm level. To activate the setup, from the terminal first send a line feed, then the instruction "TtS", followed by another carriage return. A choice menu with the following options will then be presented:

- <1> Scan period
- <2> Alarm level
- <3> Exit and resume operation

Just type the corresponding number to invoke the desired option. Any other inputs will be discarded.

After selecting "<1> Scan period", enter the desired time interval in minutes, followed by a carriage return. The allowed range is 1-99 minutes.

Upon selecting "<2> Alarm level", enter the number corresponding to the desired alarm level.

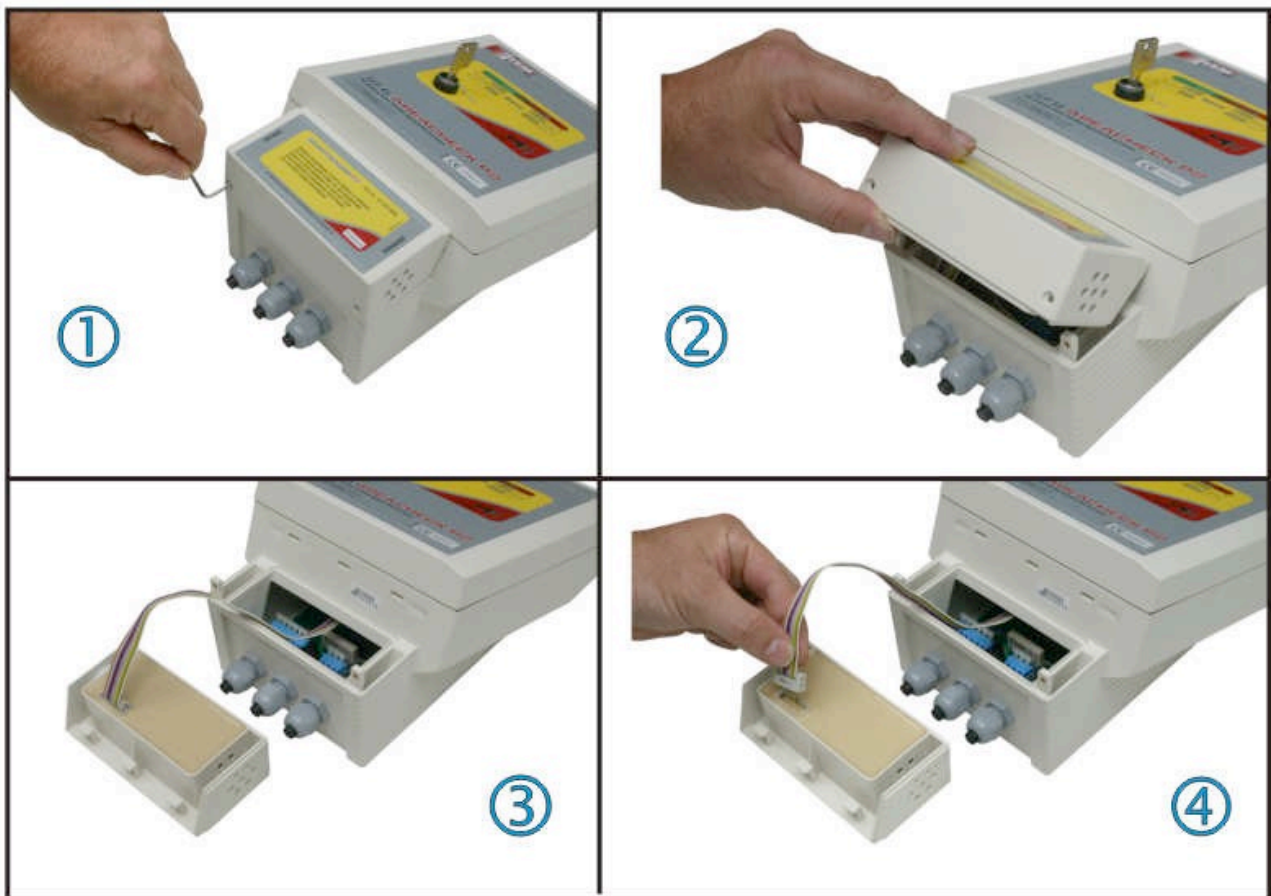
Option <3> will finish the setup and return the instrument to normal operation. Since it will now perform a restart.



## Changing the sensor unit

For changing the sensor unit, carry out the following Steps:

- Power down the P2 (remove the fuse, observing the hints below)
- Remove screws
- Take off SmartSensor as indicated below
- Pull the connector off the SmartSensor
- Fit the replacement SmartSensor
- Power up the P2 (insert fuse, observing the hints below)



NOTE: To precisely determine SF6 concentration, SF6 AREACHECK P2 requires a reference value representing clean air. This reference value is taken and stored whenever the instrument is powered up or reset.

You should therefore make sure that power up takes place under clean air conditions.

ATTENTION: The fuse (T1A) is at mains voltage. All works on it are to be carried out by qualified personnel only, observing appropriate precautions!

## Technical data

<b>Detection principle</b>	SF6: NIC®
<b>Range</b>	0 ... 2000 ppm SF6
<b>Resolution</b>	SF6: 500 ppm
<b>Mains power</b>	100-240VAC, 50/60Hz
<b>Power consumption</b>	18 VA
<b>Operating temperature range</b>	- 5°C ... 45°C
<b>Storage temperature range</b>	- 20°C ... 60°C
<b>Operating humidity range</b>	10 ... 90% non-condensing
<b>Max load, relay output</b>	2.5 A / 230 VAC
<b>Size</b>	H 280 x B 165 x T 125 mm
<b>Protection class</b>	IP 52
<b>Noise level of audible alarm</b>	> 75 dbA, 1m
<b>Weight</b>	1.5 kg (w/o wall mounting bracket)
<b>Fuse</b>	T 1A (Slow Blow)

## Instrument warranty and service

### Warranty

Standard Warranty can be extended to up to 2 years on the SF6 P1 & P1:p when registering your instrument via our website: [www.ionscience.com](http://www.ionscience.com)

To receive your Extended Warranty, you need to register within one month of purchase (Terms and Conditions apply). You will then receive a confirmation email that your Extended Warranty Period has been activated and processed.

Full details, along with a copy of our Warranty Statement can be found by visiting: [www.ionscience.com](http://www.ionscience.com)

### Service

Ion Science is pleased to offer a number of service options on our SF6 P1 & P1:p product range that allow you to choose the instrument cover that best suits your needs.

At Ion Science we recommend that all of our gas detection instruments be returned for service and factory calibration once every 12 months.

Contact Ion Science or your local distributor for service options in your area.

Find your local distributor by visiting: [www.ionscience.com](http://www.ionscience.com)

## Manual log

Manual Version	Amendment	Date updated	Instrument Firmware	PC Software
SF6 P2 V1.1	Layout and font update	28/01/13		
SF6 P2 V1.1R	Logo only	01/08/2017		
SF6 P2 V1.2	Design update	05/05/2020		
SF6 P2 V1.3	Removed reference to obsolete O2 Sensor	10/01/2026		

**Disclaimer:** Information in this manual is subject to change without notice and does not represent a commitment on the part of Ion Science. No claims, promises or guarantees are made about the accuracy, completeness, or adequacy of the information contained herein.

## ION Science Contact Details

### ION Science Ltd – UK/Head Office

Tel: +44 (0)1763 208 503

Web: [www.ionscience.com](http://www.ionscience.com) | Email: [info@ionscience.com](mailto:info@ionscience.com)

### ION Science Inc – USA Office

Tel: +1 877 864 7710

Web: <https://ionscience.com/usa/> | Email: [info@ionscienceusa.com](mailto:info@ionscienceusa.com)

### ISM ION Science Messtechnik – Germany Office

Tel: +49 (0) 2104 1448-0

Web: <https://www.ism-d.de/en/> | Email: [sales@ism-d.de](mailto:sales@ism-d.de)

### ION Science France – France Office

Tel: +33 613 505 535

Web: [www.ionscience.com/fr](http://www.ionscience.com/fr) | Email: [info@ionscience.it](mailto:info@ionscience.it)

### ION Science Italy - Italy Office

Tel: +39 051 0561850

Web: [www.ionscience.com/it](http://www.ionscience.com/it) | Email: [info@ionscience.com](mailto:info@ionscience.com)

### ION Science India - India Office

Tel: +914048536129

Web: [www.ionscience.com/in](http://www.ionscience.com/in) | Email: [kschhari@ionscience.com](mailto:kschhari@ionscience.com)

### ION Science China - China Office

Tel: +86 21 52545988

Web: [www.ionscience.com/cn](http://www.ionscience.com/cn) | Email: [info@ionscience.cn](mailto:info@ionscience.cn)